



NTSC U/C

PlayStation



SLUS-01235



# RAYMAN 2

THE GREAT ESCAPE

Ubi Soft  
ENTERTAINMENT  
www.ubisoft.com



## **WARNING: READ BEFORE USING YOUR PLAYSTATION® GAME CONSOLE.**

A very small percentage of individuals may experience epileptic seizures when exposed to certain light patterns or flashing lights. Exposure to certain patterns or backgrounds on a television screen or while playing video games, including games played on the PlayStation game console, may induce an epileptic seizure in these individuals. Certain conditions may induce previously undetected epileptic symptoms even in persons who have no history of prior seizures or epilepsy. If you, or anyone in your family, has an epileptic condition, consult your physician prior to playing. If you experience any of the following symptoms while playing a video game – dizziness, altered vision, eye or muscle twitches, loss of awareness, disorientation, any involuntary movement, or convulsions – IMMEDIATELY discontinue use and consult your physician before resuming play.

## **WARNING TO OWNERS OF PROJECTION TELEVISIONS:**

Do not connect your PlayStation game console to a projection TV without first consulting the user manual for your projection TV, unless it is of the LCD type. Otherwise, it may permanently damage your TV screen.

## **USE OF UNOFFICIAL PRODUCT:**

The use of unofficial products and peripherals may damage your PlayStation game console and invalidate your console warranty.

## **HANDLING YOUR PLAYSTATION DISC:**

- This compact disc is intended for use only with the PlayStation game console.
- Do not bend it, crush it or submerge it in liquids
- Do not leave it in direct sunlight or near a radiator or other source of heat.
- Be sure to take an occasional rest break during extended play.
- Keep this compact disc clean. Always hold the disc by the edges and keep it in its protective case when not in use. Clean the disc with a lint-free, soft, dry cloth, wiping in straight lines from center to outer edge. Never use solvents or abrasive cleaners.



# CONTENTS

The Story .....	2-3
Getting Started .....	4-5
Controls .....	6-7
Main Menu .....	8
Options Menu .....	9
Game Screen .....	10
Controlling Rayman® .....	11-12
Powers .....	13
Rayman®'s Friends .....	14-16
Rayman®'s Enemies .....	17
Objects .....	18
Magic Objects .....	19-20
Credits .....	21-22





# THE STORY

Panic in the Chamber of the Teensies and the Fairy Council. Robo-Pirates from deep in space have arrived, determined to conquer and enslave their entire world.

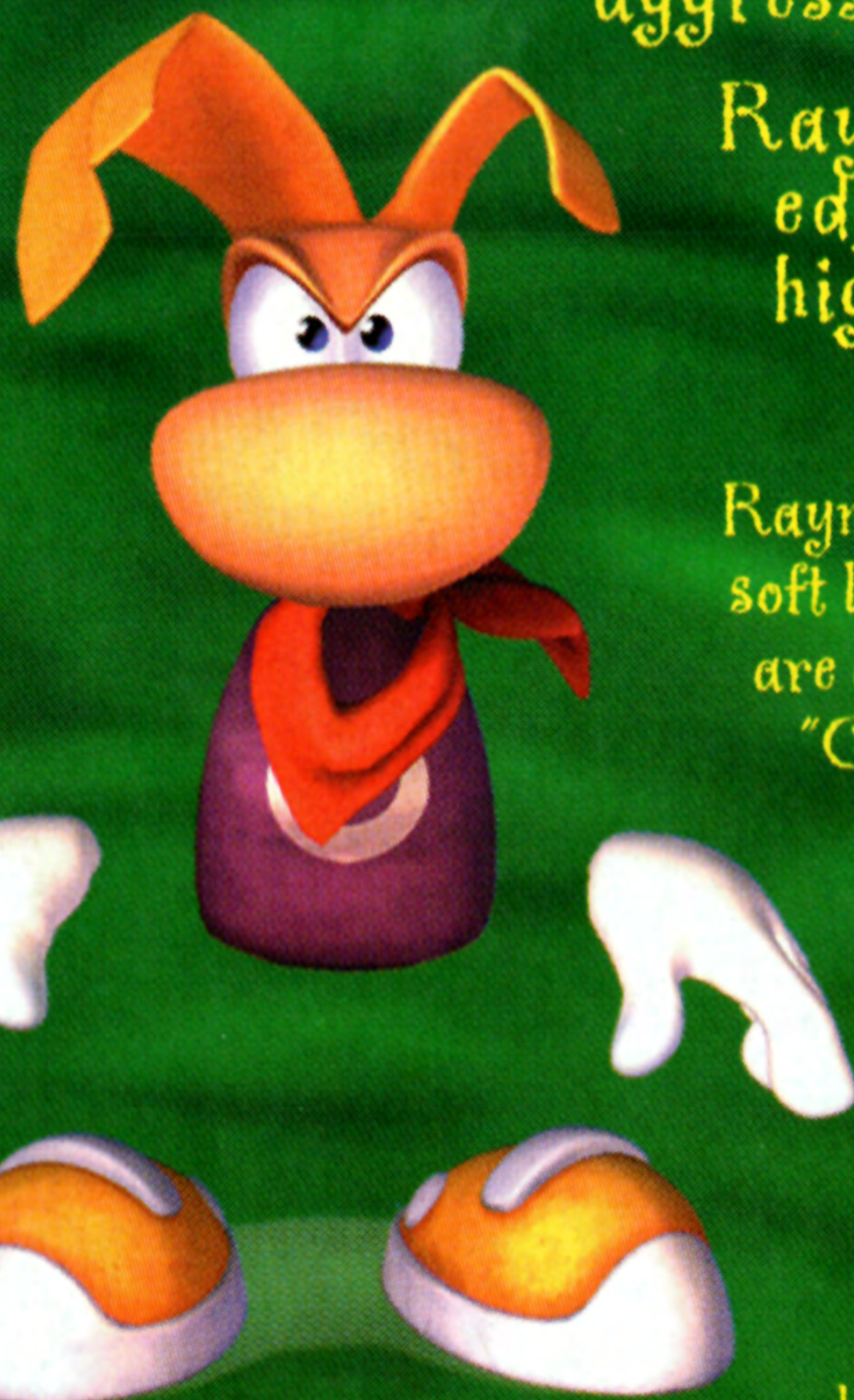
The time for combat has come. Volunteers form small resistance groups and throw themselves into battle with the evil aggressors.

Rayman® and his friend Globox go to the edge of The Great Forest, where the highest number of pirates are located.

Rayman® jumps from a tree and activates his helicopter for a soft landing in the middle of a thicket of bushes. "The Pirates are coming straight at us!", cries Rayman® to his friend. "Get ready!"

The earth suddenly begins to tremble...Several trees collapse, creating a passageway for an army of robots.

The Battle begins! Rayman® leaps into action, sending metal monsters flying with his powerful energy spheres. A little later, Globox, trembling with fright, desperately tries to make the robots rust up by creating little rain storms over their heads. A robot, creaking horribly, crashes to the ground.





"Not bad, Globox!" shouts Rayman® with a smile.

Globox tries to answer, but Rayman® doesn't hear. The strained face of Ly has just appeared in his mind.

"Rayman®...", begins Ly, in a weary voice, "The pirates have broken the heart of the world. The energy has scattered. Other than Clark, all of our brave warriors have been captured..."

Shocked by this terrible news, Rayman® lets himself be surprised by a gigantic robot who pins him between its powerful pinchers. He tries to create a new energy sphere in the palm of his hand, but to no avail. The destruction of the Primordial Core has taken away all of his powers...

Desperate, he shouts to his friend...

"They've got me, Globox! Save Yourself!"

"But...but...what about you?!"

"No time to explain! Go find Ly, she'll tell you what to do!"

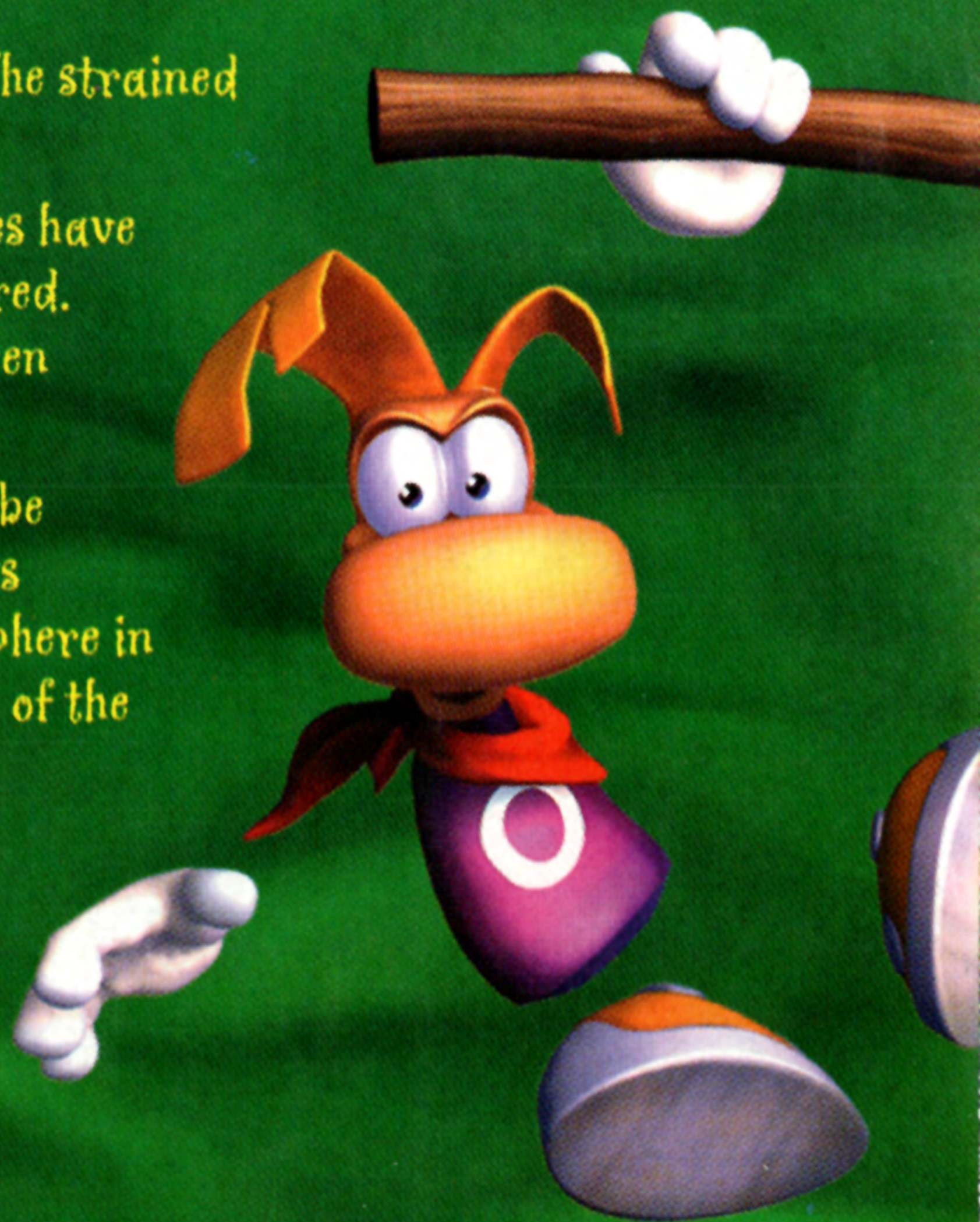
After a moment of hesitation, Globox dodges between the feet of the robots, and plunges into the high grass.

An evil laugh reverberates. Rayman® turns and sees Razorbeard, the leader of the Pirates.

"I have you, Rayman®! You'll soon be my most obedient slave...!"

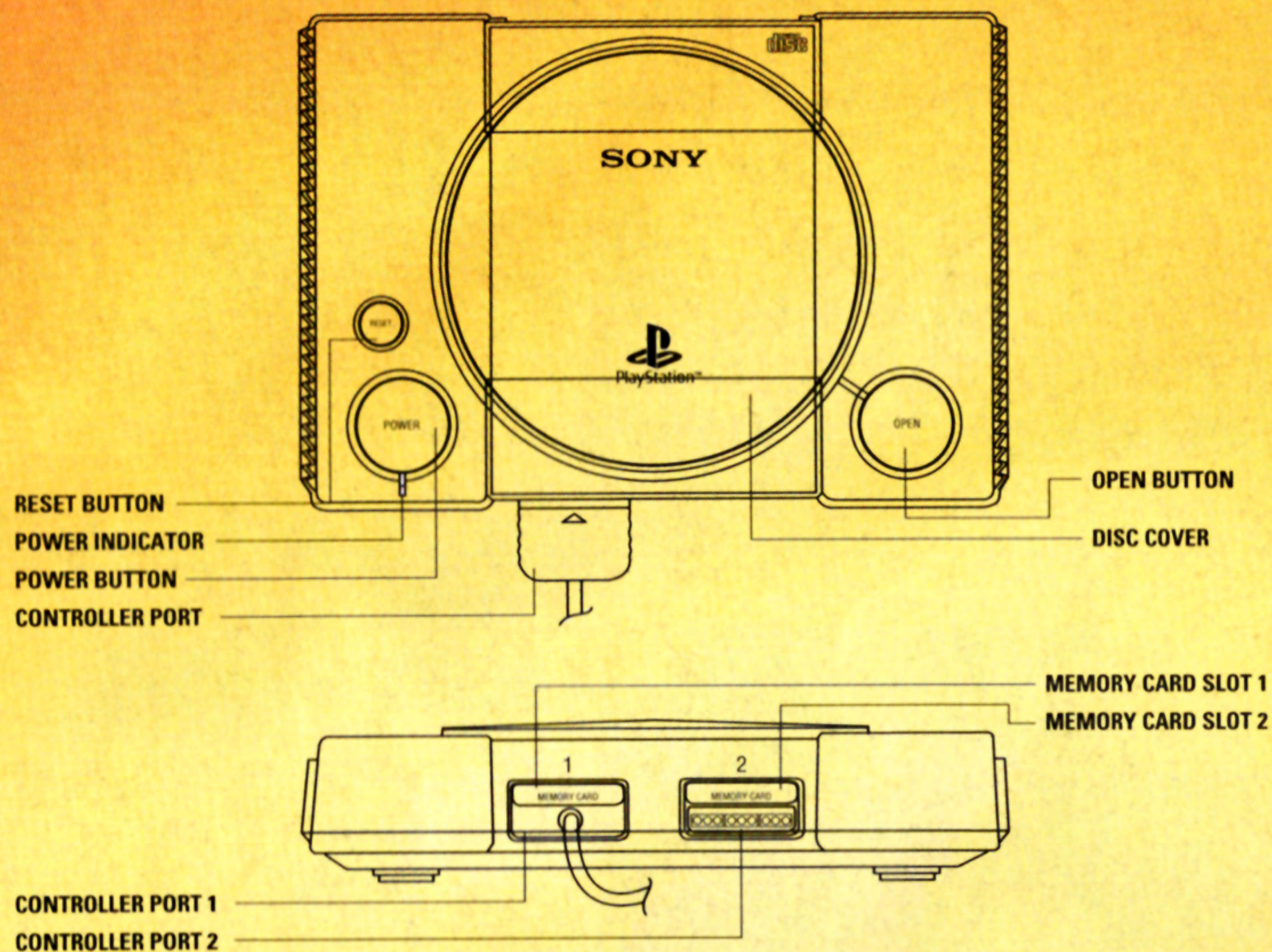
Rayman® tries to free himself, but the iron grip of the robot tightens around him. He casts a dark look at Razorbeard and shouts defiantly:

"It's not over yet, pirate! I'll find a way to escape and then I'll make you wish you'd never been born!"





# GETTING STARTED



## Setting Up

1. Set up your PlayStation® game console according to the instructions in the Instruction Manual. Make sure the power is OFF before inserting or removing a compact disc.
2. Insert the Rayman 2® Disc and close the disc cover.
3. Insert a game controller and turn on the PlayStation® game console.
4. Follow the on-screen instructions to start a game.





## > Starting The Game

Shortly after you turn on your PlayStation® game console, the Rayman 2 title screen appears. Press X or the Start Button to display the Main menu. Select New Game to begin a new game or select Load to load a previously saved game.

## > Memory Card

To save game settings and progress, insert a Memory Card into Memory Card slot 1 of the PlayStation® game console before starting play. You can load your saved game from the same card, or from any Memory Card containing a previously saved Rayman 2® game. Although you can play Rayman 2® without a Memory Card, you will not be able to save or load your games. We recommend using a Memory Card.

### **Loading**

It is possible to load a saved game at any moment from the game menu. To access the game menu, press the Start Button at any point during the game. Select LOAD to load a saved game.

### **Saving**

In order to save a game, Rayman must be in the Hall of Doors. This magic place, built long ago by the Teensies, allows access to new worlds. Note: Rayman can only get to the Hall of Doors after travelling through an entire world. To move from one world to another when you are in the Hall of Doors, use the Left Analog Stick. To enter a selected world, jump through by pressing the X Button.

## > Navigating in the Menus

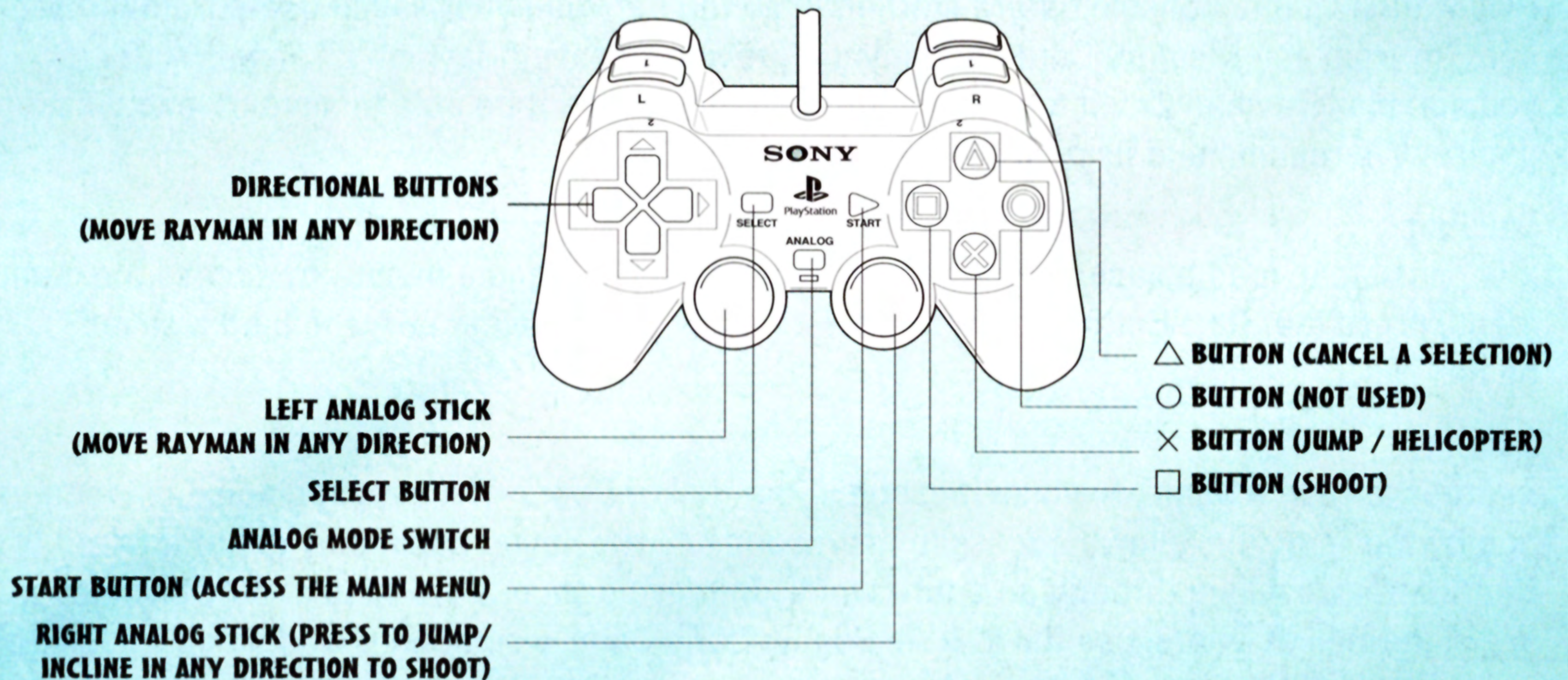
Use the Directional Buttons to navigate through the menus. Press the X Button to select and the Triangle Button to return to go back to the previous menu.





# CONTROLS

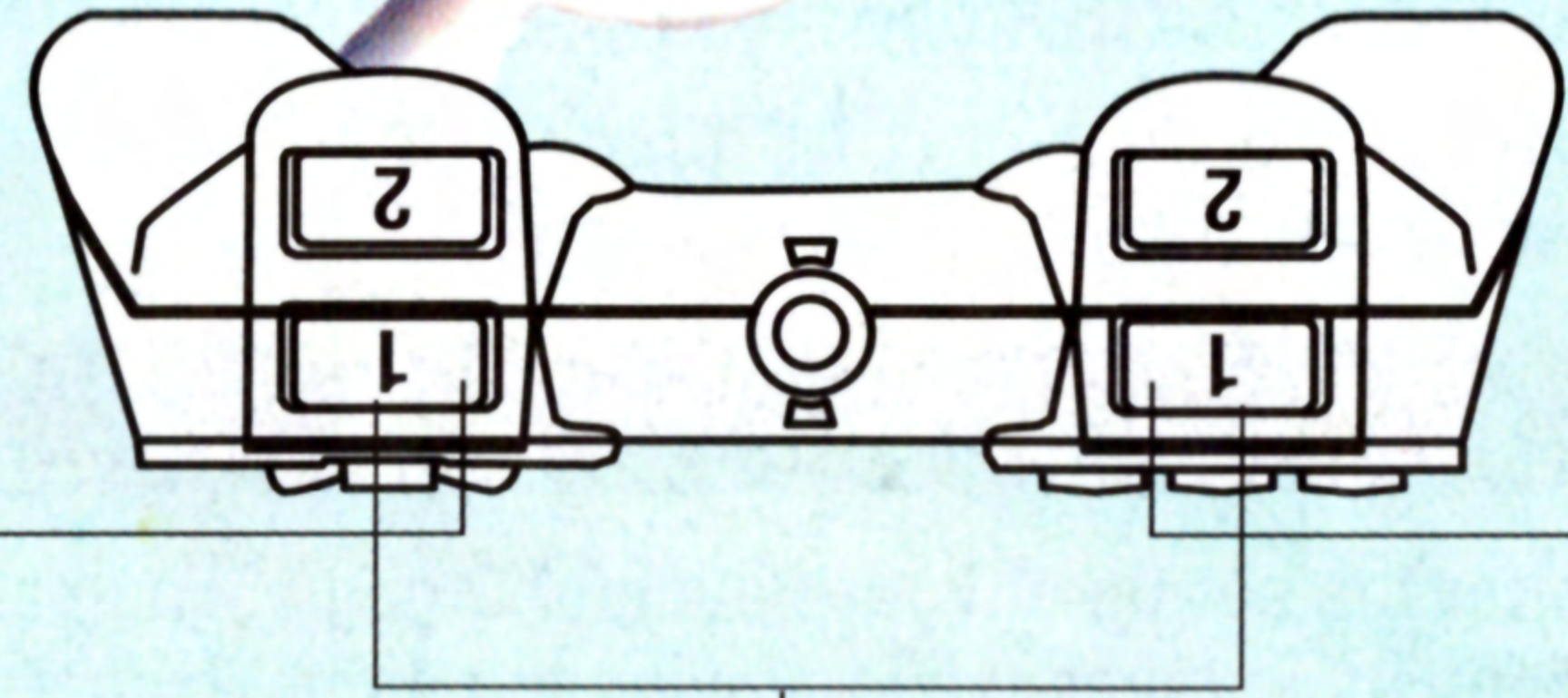
You can play Rayman® 2 using the Directional Buttons or the Left Analog Stick if you have a DUALSHOCK™ analog controller.



\* The Left Analog Stick of the DUALSHOCK™ analog controller is functional only when the LED is ON (lit).







**L1 BUTTON**  
Rotate Camera  
Counter-clockwise

**R1 BUTTON**  
Rotate Camera  
Clockwise

**L1 BUTTON + R1 BUTTON**  
Bring the camera behind Rayman

### Camera use

To get your bearings and find your way around, making good use of the camera is crucial. You can move the camera and change its angle with the following buttons: L1 / R2 Buttons: provide a panoramic view moving to the left or right around Rayman. The camera position returns to normal once the character is moved. R2 Button: puts the camera behind Rayman.





# MAIN MENU

## > New Game

To begin a new adventure, choose NEW GAME from the Main Menu.

## > Load

To load a previously saved game, select LOAD from the Main Menu. Select LOAD only if you have already saved a game.

## > Options

Choose OPTIONS to alter the set-up of your Rayman® 2 game. You can also access the Options Menu at any time while playing the game, by pressing the Start Button.

## > Stopping Play

Press Start at any time during play and select Quit Game. Before stopping, be sure to save your game so you can continue play later.





# OPTIONS MENU

## Center Screen

Press the D Buttons in any direction to position the picture on your TV screen. Press the Square Button to return to the default configuration.



## Sound

Choose Mono or Stereo

## Music

Adjust the sound level of Music played during the game.

## Sound Effects

Adjust the level of Sound Effects played during the game.

## Language

Select English, French or Spanish.



## Vibration

The vibration feature may be turned on or off, but you can only access this option if you have an DUALSHOCK™ analog controller.

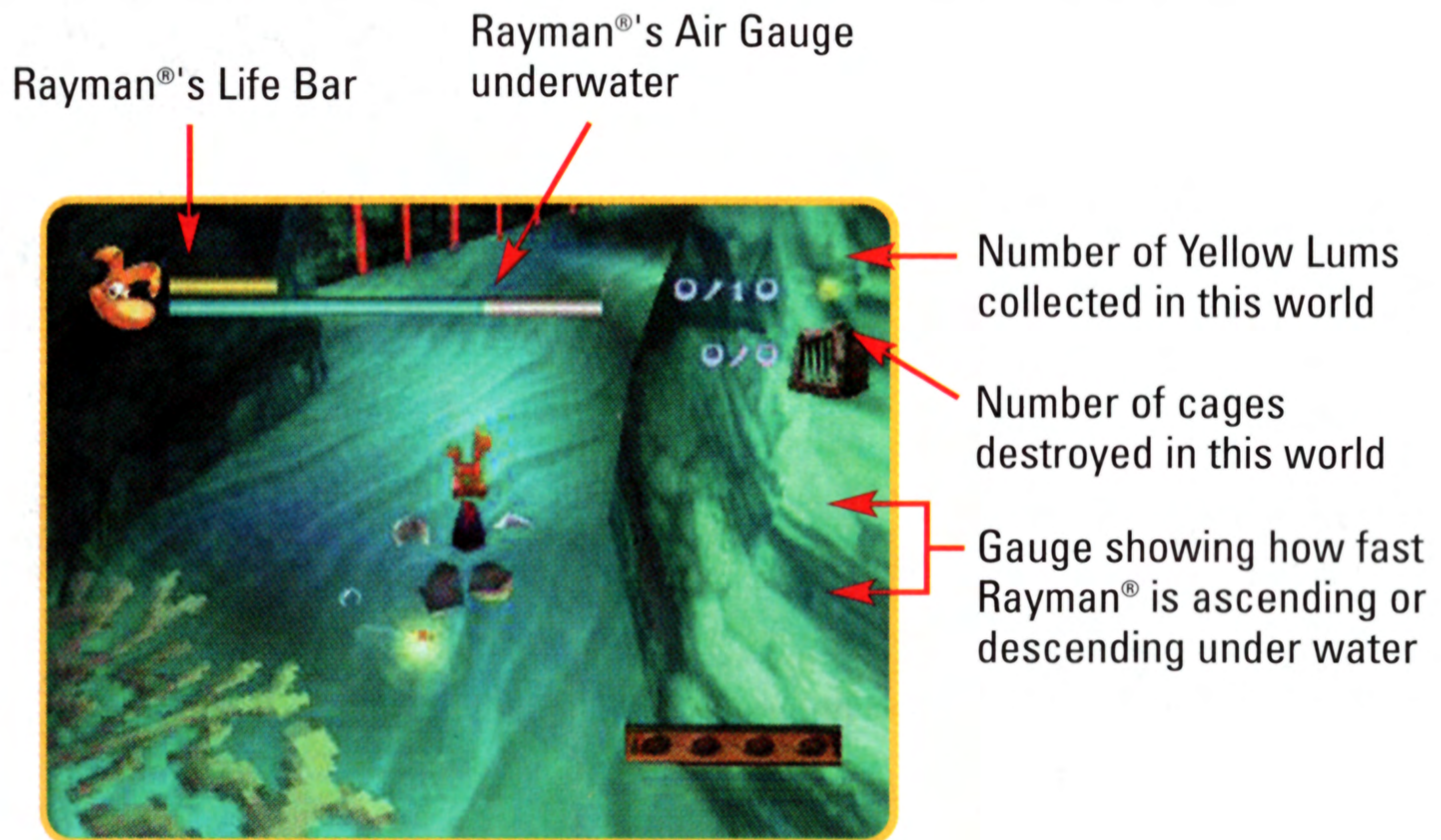




# GAME SCREEN

Throughout his adventures, Rayman® should break open the cages which imprison his friends. This allows him to get the Power Fist that will make his shots more powerful, and to collect the precious energy spheres called "Lums". Above all, he must find the four magic masks which will allow him to awaken Polukus, the spirit of the world.

While playing, you can press the Triangle Button at any time to display Rayman®'s Life Bar as well as the number of Yellow Lums collected and the number of cages destroyed.





# CONTROLLING RAYMAN®

**TO MOVE AROUND**, point the Left Analog Stick in the desired direction. The more you incline the stick, the faster he moves.



**TO JUMP**, press the X Button.



**TO SHOOT**, press the □ Button.



**TO MOVE SIDEWAYS**, use the Left Analog Stick while pressing the R2 Button. This is very helpful for keeping your enemies in sight and avoiding their fire.

**TO SWIM**, press the X Button use the Left Analog Stick left/right to turn, up to dive, and down to return to the surface.

*Note: Rayman® has total freedom of movement while he's swimming*





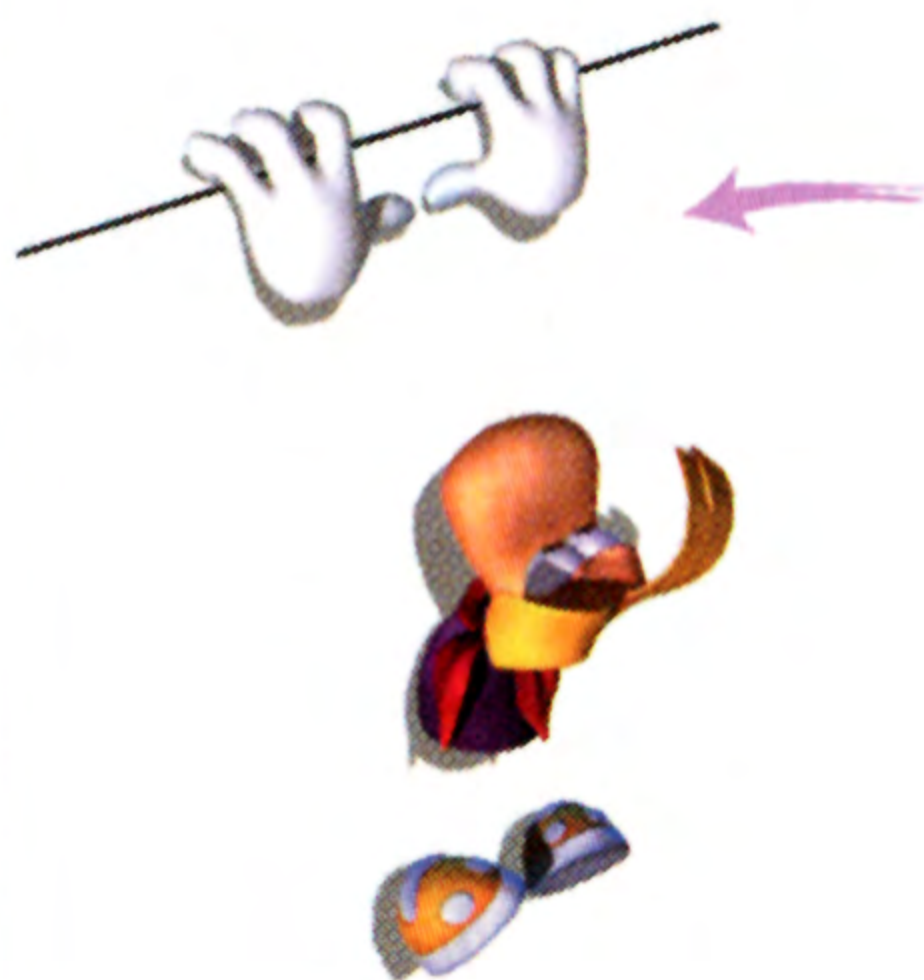
# CONTROLLING RAYMAN®

**TO ACTIVATE THE HELICOPTER,** press the X Button whenever Rayman® is not touching the ground, such as in the middle of a jump or during a fall.

To stop the Helicopter, press the X Button once again.

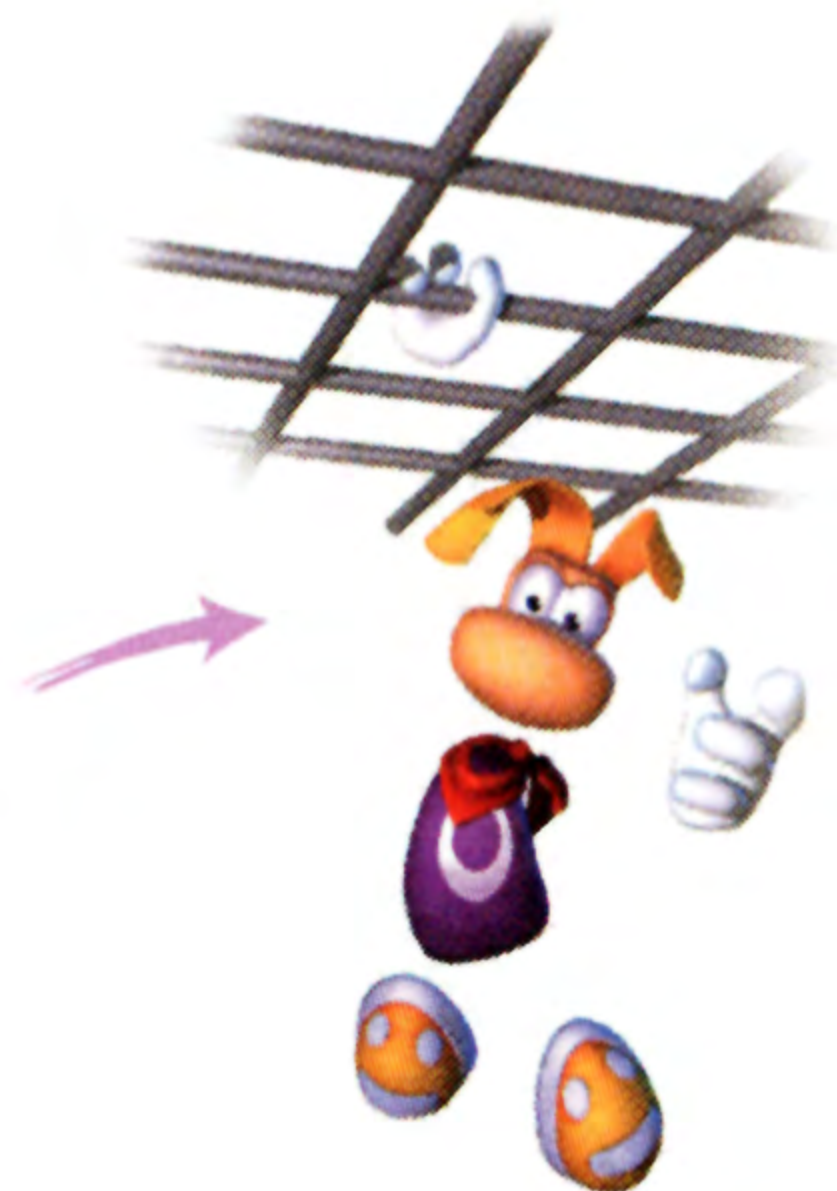
Remember, the Helicopter can only be activated when Rayman® is in the air already.

*Hint: The Helicopter is helpful for landing with precision, in the middle of a jump or during a fall. Also, use Rayman®'s shadow to help you make a steady landing.*



**TO GRAB** onto the edge of most walls, jump and point the Left Analog Stick in the direction of the wall. Rayman® will grab hold automatically.

**TO CLIMB** along nets, walls covered in plant life and spider webs, jump while pointing the Left Analog Stick or the Directional Buttons in the direction of the wall. Rayman® will grab onto it automatically. You can then move around freely with the Left Analog Stick. To release, jump by pressing the X Button.





# POWERS

Throughout his adventures, Rayman<sup>®</sup> will receive new powers, which give him some amazing moves!



**TO PROGRESSIVELY INCREASE THE POWER OF YOUR SHOT**, press the  Button and keep it pressed down. The energy ball in Rayman<sup>®</sup>'s hand will become bigger and bigger. When the desired strength is attained, shoot by releasing the  Button.



**TO GRAB ONTO PURPLE LUMS**, shoot them. Once you've grabbed on, you can swing in the direction of your choice by using the Left Analog Stick. To release, press the X Button.



**TO FLY IN HELICOPTER MODE**, activate the helicopter by pressing the X Button and keep it pressed down. Not only can the helicopter be used to land you safely, but flying in helicopter mode gives you total freedom to fly in any direction! To stop flying in Helicopter mode, just land on solid ground.



*Hint: Press the R2 Button to stabilize your flying direction and to avoid obstacles.*



# RAYMAN®'S FRIENDS

*The inhabitants of Rayman®'s world fall in to two categories: Magical Beings, who are gifted with fantastic powers, and the People....*

## > The Magical Beings

### ✦ POLUKUS

He is the spirit of the world, the creator of all that is and will be... His power is such that his dreams can become reality... Long, long ago he went away from this world, and only by reuniting the four magical masks (see page 20) can he be brought back...



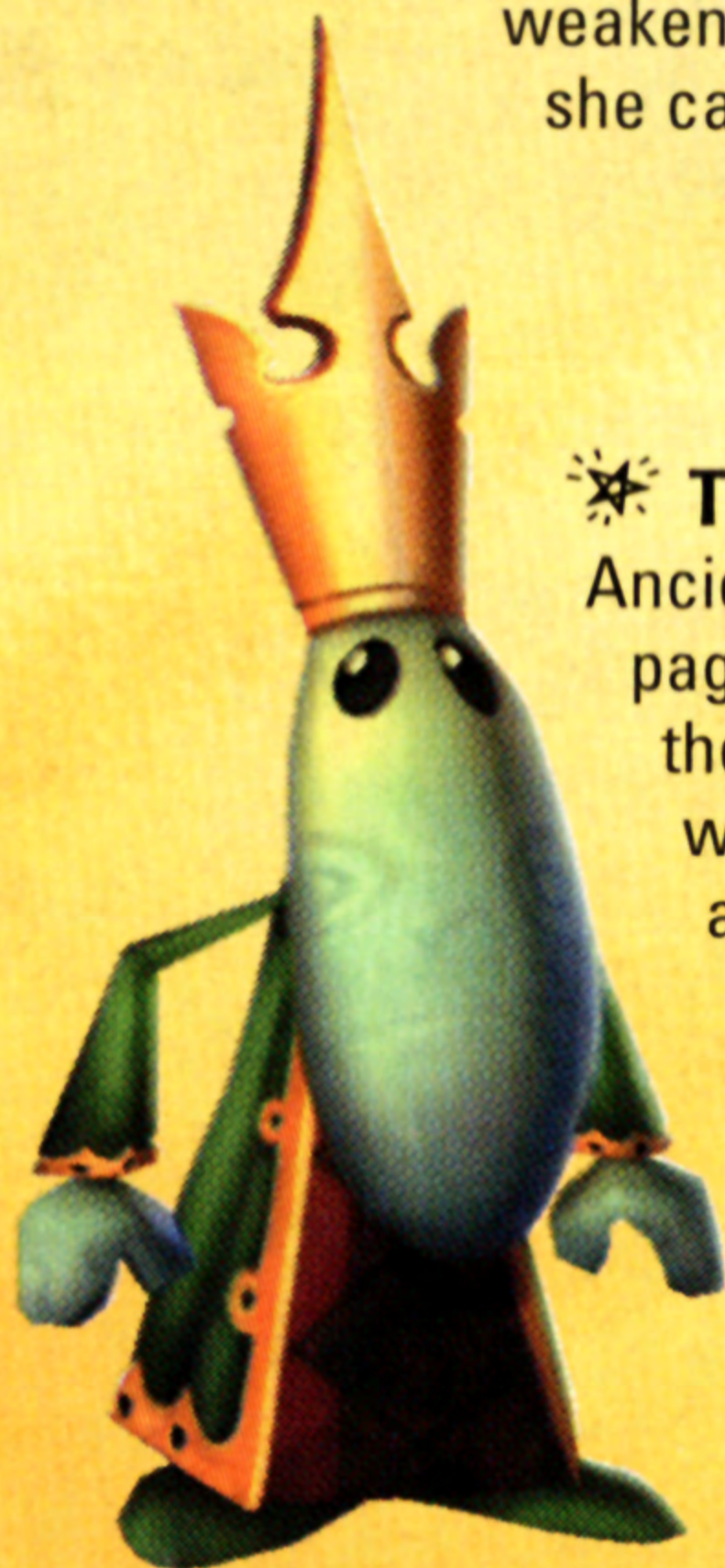
### ✦ LY

Ly is a fairy, and like all fairies, she possesses great powers. Unfortunately, the explosion of the Primordial Core by the pirates has weakened her. When she has reunited enough energy, she can create Silver Lums, which give amazing new powers to Rayman®



### ✦ THE TEENSIES

Ancient and wise people who long ago built the Island of Doors (see page 5), that magical place where access is given to all the regions of the world. Very old and a little absent minded, they have forgotten which of them is their King, and spend much of their time performing acrobatic dance moves to make the youngest green with envy.





## > The People

### ✦ **GLOBOX**

Adorable, if a little simple, Globox is Rayman®'s best friend. He has the power to create forceful little rain storms which can be used to put out fires or make plants grow. With the aid of his mate Uglette, he has produced a prodigious family: more than 650 children at last count!



### ✦ **CLARK**

A mountain of muscles, Clark is an army all by himself. With one mighty blow, he can send an entire regiment of pirates flying. His only weak point: a somewhat sensitive stomach. This can cause problems, especially when in the heat of battle, he munches a robot that's a little too rusty...

### ✦ **THE MURPHYS**

The Murphys are cultivated hedonists who love playing practical jokes and always sport wide grins. More than one Ludiv has fallen prey to their pranks!



### ✦ **CARMEN THE WHALE**

A magnificent marine creature, who's job it is to survey the depths of the ocean and deposit the air bubbles which can be the difference between life and death for stray plants and animals. She is sometimes pursued by piranhas with heartburn, who are quite fond of her air bubbles...





This young and spirited serpent is the ferryman for the Marshes of Awakening. He helps the inhabitants water ski

across the swamps...

### ✧ SSSSSAM



### ✧ THE LUDIVS

These little myopic fairies are equipped with large eyeglasses that allow them to avoid any in flight collisions. Generally deprived of these tools, the fairies are found scattered in the trees and knocked out on the ground. This is how the pirates captured a great number of them.

### ✧ THE DENYS

Of hyperactive nature, the Denys spend more than half of their life hopping in one spot while emitting joyous outcries. This movement enables their spirit to wander. They regularly stop jumping to deeply philosophize amongst themselves and the Murphys.





# RAYMAN®'S ENEMIES



## ☠️ **Admiral Razorbeard**

The pirate leader, he is famous throughout the galaxy for reducing over one hundred peaceful planets to cosmic dust. Don't be fooled by his pathetic and silly appearance, his ferocity is unmatched.

His dream? Overrun Rayman®'s world and reduce all its inhabitants to slavery...

## ☠️ **The Henchmen**

These are the pirate's robot invasion force. Totally devoted to Admiral Razorbeard, they enforce a reign of terror by capturing anyone unlucky enough to cross their paths. There exist several different models, each with its strong and weak points. It'll be up to you to figure them out...



## ☠️ **The Guardian of the Cave of Bad Dreams**

A terrifying monster who's job it is to guard the subterranean cave, where the creatures stemming from nightmares of Polukus are locked away. No one has dared to venture within the Cave of Bad Dreams, even though it's rumored to contain an even more precious treasure...



## ☠️ **The Zombie Chickens**

We can no longer even keep track of all the sinister results provoked by the arrival of the pirates: disturbances in overall harmony, the proliferation of piranhas, giant spiders and caterpillars, etc....

Terrified by all these events, the hens began laying dead eggs, out of which burst the horrible Zombie Chickens...





# OBJECTS



## < Cages

The pirates have imprisoned many inhabitants in these little cages sealed with vital energy. Break the cages to free Rayman's friends and increase the life bar.

## > Kegs

Filled with gunpowder, they explode at the smallest shock. The more advanced models can even fly.



## < Shells

Built by the pirates, these are mule-headed missiles which can only be subdued by extreme patience. Most have legs; some can fly.

## > Plums

These strange pieces of fruit have several purposes. You can throw them at your enemies, climb onto them and move around by shooting in the opposite direction, and even surf lava flows on them.



## < Magic Spheres

Placed on pedestals of the same color, Magic Spheres open the doors to mysterious temples.

## > Blockades

Mediocre at best architecturally, the pirates have reinforced their constructions with blockades. The wooden blockades are very fragile but the metal ones will only yield to an explosive.





# MAGIC OBJECTS



## < **The Stones of Thought**

The Stones of Thought provide a telepathic link to Ly. Whenever Rayman® needs a little help or advice, he should approach one of the Stones, and Ly will appear in his mind.



## > **Magic Doors**

Present at the beginning and the end of a world, they take you to the Island of Doors (see page 7) if you go through them.



## < **The Power Fist**

Having the Power Fist makes Rayman®'s shots more powerful.

*Note: If Rayman® dies or gets hit, he loses part of the energy in his Power Fist. After three of these losses, his shots go back to normal power.*

## > **The Four Masks**

These magic masks are hidden inside secret and mysterious sanctuaries. The ancient legends say that whoever can reunite the four can awaken mighty Polukus.



*Keep an eye out, as there are many secret doors and passageways that lead to unknown worlds where you can find fabulous treasures and perhaps become more powerful.*



## The Lums

Lums are very powerful bursts of energy. Each color has its own special power.



### < Yellow Lums

These are the 1,000 shards broken from the Primordial Core when the pirates exploded it. When Rayman® has collected enough of them, he'll be able to negotiate his entry into new worlds.

*In addition, they contain precious knowledge. The more Rayman® can gather, the more he knows of the secrets of the world. At any moment in the game, just press the Directional Buttons to read new information provided by the Yellow Lums.*

### > Super Yellow Lums

Ancient Lums are recognized by their larger size and big smiles. They are five times more powerful than normal Yellow Lums.



### < Red Lums

Packed with vital energy, they restore Rayman®'s Life Bar.

### > Purple Lums

By shooting them, Rayman® can grab onto them and swing from one to another, thereby crossing vast areas without touching the ground.



### < Blue Lums

Oxygen rich, they restore Rayman®'s Air Gauge when he's swimming underwater.

### > Green Lums

These Lums are very special. They record Rayman®'s progress. If he should die, he will reappear at the place where he last took a Green Lum. If Rayman® had Zero life point, he will restart the entire level at the beginning.



### < Silver Lums

The Silver Lums are fashioned by fairies. They invest Rayman® with new and amazing powers.





# CREDITS

<b>Original Concept</b>	Michel Ancel, Frederic Houde		
<b>Project Manager</b>	Nathalie Paccard With Shi Hai		
<b>Original Graphic Design</b>	Alexandra Ancel, Hubert Chevillard, Jacques Exertier		Gang, Lu Jian Yi, Shi Xiao Ming, Zhu Zhen Yang, Xiang Ying Hua, Xu Xiao Yue, Zhu Li and Qi Ze Yu, Yao Bin, Zhang Jia Lu and Sun Hui Feng
<b>Graphic Studio Managers</b>	Dominique Bordenave, Sandrine Maigret, Jean-Michel Tari, Jacques Dussault	<b>Infodesign Studio Managers</b>	Cyril Derouineau, Sylvain Cornillon
<b>Graphic Project Manager and Artistic Director</b>	Cheng Yu	<b>AI programming Project Manager</b>	Wu Jun with Yin Yi Ting
<b>Graphic Technical Responsible</b>	Bai Yu Song, Wu Min Jie	<b>Main Character Programmer</b>	Hu Pin Fan
<b>Artists</b>	Bai Yu Song, Liao Jun Chen, Wu Ming Jie, Yu Zhou Hong and Chen Hao, Fan Yi Jia, Chen Qian, Chen Qing, Chu Yang, Gu Qiang, Shen Rong Lin, Wang Zhao Jun, Wu Wei, Yang Bo, Yao Chao Yang, Yin Ming, Zhu Liang, Zhang Lei and Zhao Ya Na	<b>Other Characters Programmers</b>	Bao Song, Dong Ming, Lu Yi, Xiong Jun, Yu De Yong, Yu Jiang, Yu Ji Ge, Zhang Tao, Zhang Kun and Duan Xue Dong, Liu Wei, Ma Zhen, Wang Bin, Wang Nin, Yang Jin Hui, and Li Tong, Yan Jun, Yuan Pei Sheng
<b>Animation</b>	Gu Jie with Lin Da Wei	<b>Music By</b>	Eric Chevalier
<b>Special Effects</b>	Shou Jia An with Tang Ye Ping	<b>Sound Production Director</b>	Didier Lord
<b>Original Game Design</b>	Frederic Houde, Michel Ancel	<b>Sound Production Manager</b>	Sylvain Brunet
<b>Game Design Studio Manager</b>	Serge Hascoet	<b>Sound Design Studio Managers</b>	Christine Chosson, Adrian Jones
<b>Game Design Project Manager</b>	Liu Jing	<b>Sound Designer</b>	Yang Jie
<b>Lead Game Designer</b>	Jean-Christophe Guyot	<b>Sound Effects</b>	Talk Over
<b>Quality Assurance</b>	Ding Dong	<b>Data Management Studio Manager</b>	Gueneale Mendroux
<b>Game Designers</b>	Chen Yu, Shen Ye Tao, Xiong Jie, Yang Jin, Wu Li, Wu Yi Dong, Zhang Min Yi, Ding Dong and Sun Wei.	<b>Data Manager</b>	Zong Jin with Bai Yu Bing
<b>Software Studio Managers</b>	Eric Huynh, Julien Merceron, Olivier Chappe	<b>Scenario and Dialogues</b>	David Neiss
<b>Software Project Manager</b>	Li Jing Song	<b>Based on a Story by</b>	Michel Ancel
<b>Programmers</b>	Chen Bao Wu, Chen Shen Feng, Wei Xiang and Chen Gang, Fan Wei Cheng, Ge Zi Ang, Li Yong	<b>Tools and Technical Support</b>	Daniel Raviart, Qi Ze Yu and Li Sheng Yong, Zou Nan Hai
		<b>Test Studio Managers</b>	Vincent Paquet, Bai Hai Lei
		<b>QA Manager</b>	Eric Tremblay
		<b>Test Project Manager</b>	Liu Jun
		<b>Focus Group</b>	Yan Xin





**China Studios  
General Manager**

Gilles Langourieux

**International Marketing**

Laurence Buisson with Domitille  
Doat, G eraldine Durand

**Producer**

Ubi Studios, Michel Guillemot

**Publisher**

Ubi Soft, Yves Guillemot

**Special Thanks To:**

Pauline Jacqu e and original  
version team: Francis Coldeboeuf  
Vincent Greco, David Fournier,  
Fran ck Leveau, Fr d eric Balint,  
Fr d eric Philippe, Marc  
Villemain, St phane Leroy,  
Yves Babitch

**Very Special Thanks To:**

Romain His, Celine L-Tellier,  
Olivier Palmieri

**US Marketing Manager:**

Mona Hamilton

**Public Relations:**

Sandra Yee, Melanie Melton,  
Dana Whitney

**Special Thanks To:**

Laurent Detoc, David Bamberger,  
Dennis Roy, John Chowanec,  
Jennifer Groeling, Rich  
Kubiszewski, Mari Sakai,  
Kevin Lalli, Austin Gavin,  
Yasmin Naboa, Paul Brenden,  
Michael Davis, Axiom Design  
Willie Wareham, Wendy  
Robinson



PROOF OF PURCHASE

**Rayman® 2**  
The Great Escape  
0.08888.26005.9





NEED HINTS & TIPS?

UBISOFT Hint Line  
900-420-4UBI

This service will provide you with exclusive tips and game play secrets for Rayman 2.



Call is \$.95 per minute. You must be 18 or have parental permission to use this service.



**Mother Nature is here to spank you silly.**



Photo by Jeff Divine



Battle the world's wildest waves, astride one of 15 licensed boards. Shredding to the surf anthems of Pollo, Del Mar, The Aquamen and Los Straitjackets, try to tame the legendary tides of Hawaii, France, Australia Japan and California. Execute huge aerials, cutbacks, off the lips, or take a beating from Mother Nature herself.

## Game Features:

- 15 different surfboards from Gerry Lopez, Local Motion, Pearson Arrow, Town & Country and Natural Art.
- Awesome surf anthems from The Aquamen, Pollo Del Mar and Los Straitjackets.
- Pull off mondo moves like cyclones, helicopters, left or right spins, off the lip, cutbacks and tube rides.



Ubi Soft Entertainment and the Ubi Soft logo are trademarks of Ubi Soft, Inc. Surf Riders is a trademark of Ubi Soft, Inc. Published by Ubi Soft Entertainment under license by SUNSOFT. Developed by ACOT. © 1999 KSS. The Natural Art logos are trademarks of Natural Art, Inc. The Local Motion logo is a trademark of Local Motion Inc. The Pearson Arrow logo is a trademark of Pearson Arrow Inc. The Town & Country Hawaii and yin yang logos are trademarks of Town & Country Inc. The Mr. Zog's Sex Wax logo is a registered trademark of Sex Wax, Inc. All other marks are the rights of their respective owners. G-SHOCK is a registered trademark of Casio Computer Co., Ltd. All rights reserved.



# UBI SOFT ENTERTAINMENT, INC. LIMITED WARRANTY

Ubi Soft Entertainment warrants to the original purchaser that the optical media on which Rayman<sup>®</sup> 2 is distributed is free from defects in materials and workmanship for a period of ninety (90) days from the date of purchase. This Ubi Soft, Inc. software program is sold "as is", without express or implied warranty of any kind, and Ubi Soft is not liable for any losses or damages of any kind resulting from the use of this program. Ubi Soft, Inc. agrees for a period of ninety (90) days to replace defective media free of charge, provided you return the defective item with dated proof of payment to the store from which this product was purchased. This warranty shall not be applicable and shall be void if the defect in the Ubi Soft, Inc. software product has arisen through abuse, unreasonable use, mistreatment or neglect.

**LIMITATIONS** - This warranty is in lieu of all other warranties and no other representations or claims of any nature shall be binding on or obligate Ubi Soft, Inc. Any implied warranties applicable to this software product, including its quality, performance, merchantability and fitness for a particular purpose, are limited to the ninety (90) day period described above. In no event will Ubi Soft, Inc. be liable for any direct, indirect, special, incidental, or consequential damages resulting from possession, use, inability to use or malfunction of this Ubi Soft, Inc. software product or documentation, even if advised of the possibility of such damages. In no case shall Ubi Soft, Inc.'s liability exceed the amount of the license fee paid. The warranty and remedies set forth above are exclusive and in lieu of all others, oral or written, express or implied. Some states do not allow limitations as to how long an implied warranty lasts and/or exclusions of liability may not apply to you. This warranty gives you specific rights, and you may also have other rights that vary from state to state.

**TECHNICAL SUPPORT** - If you need technical assistance with this product, call us at (415)547-4028 Monday through Friday between 8:30AM and 5:30PM, Pacific Standard Time, or write to us at the address noted below. No hints, tips, or codes are available from this phone number or address.



Ubi Soft Entertainment, Inc. 625 Third Street, 3rd Floor, San Francisco, CA 94107

© 2000 Ubi Soft Entertainment, Inc.



NOW ON HOME VIDEO!

# The Amazing Animated Adventures of Rayman®



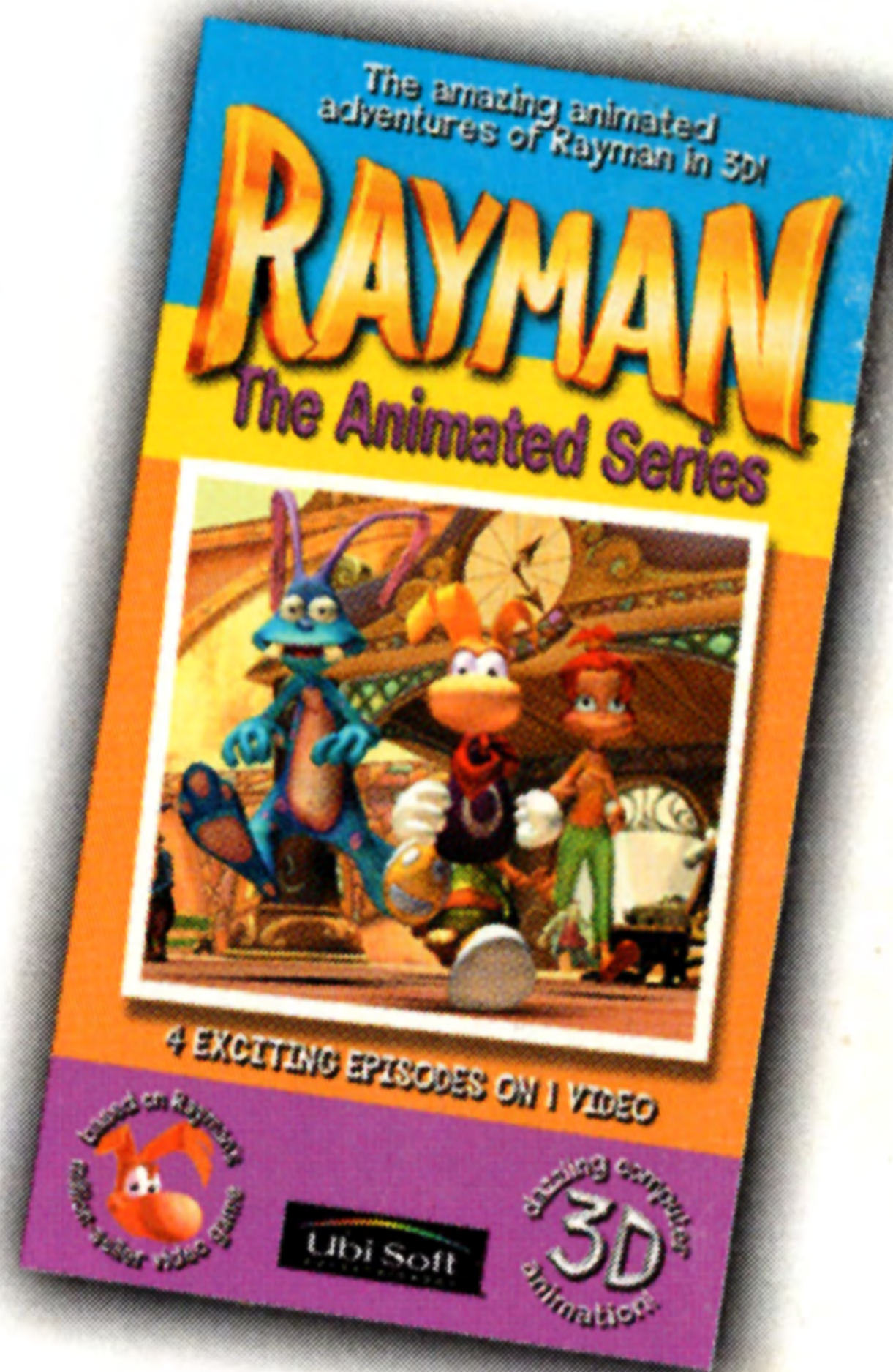
Rayman and his friends escape the evil clutches of Rigatoni, the cruel circus master, and head for freedom in the giant tree city of Aeropolis. The chase is on as Rayman and his pals soon find out that Rigatoni has hired the bumbling Inspector Grub to capture and return them to the circus.

- Four exciting episodes
- Plus "The Making of Rayman: The Animated Series"

only **\$14.95** plus \$3.00 shipping and handling

Order online at the Ubi Shop: [www.ubisoft.com](http://www.ubisoft.com)

Or call toll free: 1-877-RAYMAN1



Ubi Soft Entertainment 625 3rd St, 3rd Floor, San Francisco, CA 94107 (415) 547-4000

Rayman ©2000 Ubi Soft, Inc. Ubi Soft Entertainment is a trademark of Ubi Soft, Inc. Rayman, Ubi Soft and the Ubi Soft Entertainment logo are registered trademarks of Ubi Soft, Inc. The Great Escape is a trademark of Ubi Soft Entertainment.

All Rights Reserved.

Licensed by Sony Computer Entertainment America for use with the PlayStation game console. PlayStation and the PlayStation logos are registered trademarks of Sony Computer Entertainment Inc. The ratings icon is a trademark of the Interactive Digital Software Association. Manufactured and printed in the U.S.A. THIS SOFTWARE IS COMPATIBLE WITH PLAYSTATION GAME CONSOLES WITH THE NTSC U/C DESIGNATION. U.S. AND FOREIGN PATENTS PENDING.

